

2024 key sustainability metrics

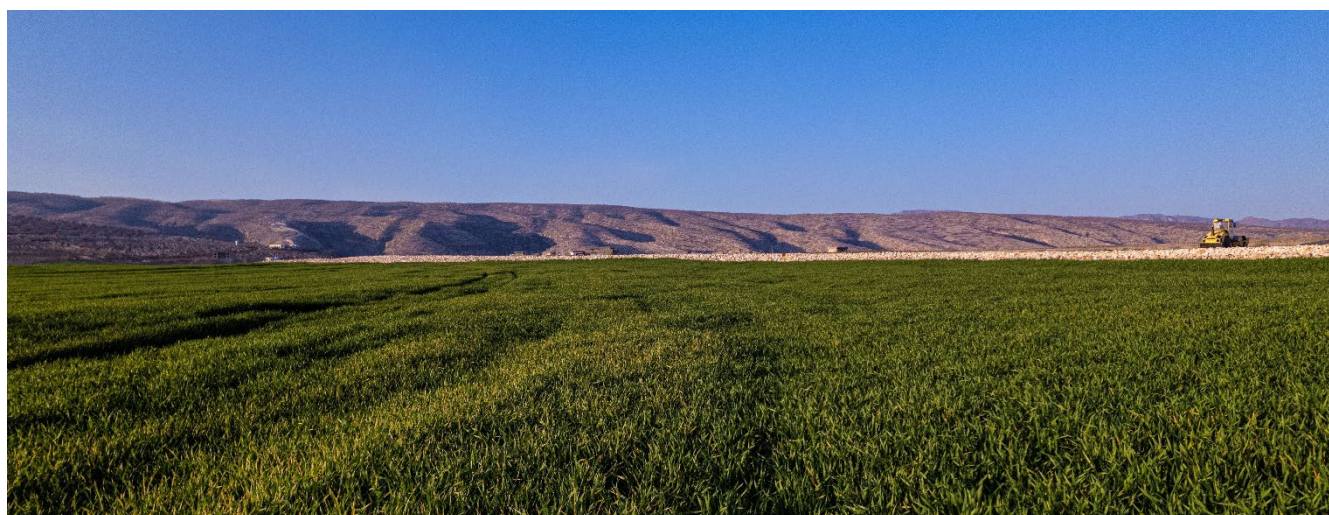
Environment

Key performance highlights

Material factor	Indicator	Unit	2022 ⁽¹⁾	2023 ⁽¹⁾	2024 ⁽¹⁾
GHG emissions⁽³⁾	Total scope 1 emissions	ktCO ₂ e	739	365	647
	Scope 1 emissions – Flaring	ktCO ₂ e	654	306	560
	Scope 1 emissions – Venting	ktCO ₂ e	21	10	19
	Scope 1 – Fugitive	ktCO ₂ e	5	4	5
	Scope 1 – Combustion of petrol and diesel	ktCO ₂ e	9	15	12
	Scope 1 – Combustion of fuel gas	ktCO ₂ e	50	31	51
	Total CH ₄ emissions ⁽²⁾	ktCO ₂ e	57	28	32
	Total scope 1 emissions intensity	kgCO ₂ e per barrel	57.2	57.1	54.5
Other emissions⁽³⁾	Total scope 3 emissions	ktCO ₂ e	6,497	3,219	5,949
	Total SO ₂ emissions	ktSO ₂	87	41	79
Energy consumption⁽⁴⁾	Total energy consumption	kWh	1,688,110	1,514,197	1,806,085
	UK	kWh	50,366	50,052	26,260
	Kurdistan Region of Iraq	kWh	1,637,744	1,464,145	1,779,824
Water management⁽³⁾	Total water withdrawn	m ³	80,628	74,799	51,131
Waste management	Recycled solid non-hazardous waste	% of total waste	92	95	97
	Recycled solid hazardous waste	% of total waste	86	49	23
	Recycled liquid non-hazardous waste	% of total waste	100	100	100
	Recycled liquid hazardous waste ⁽⁵⁾	% of total waste	100	100	100
Spills	Total number	Incidents	9	6	10
	Total volume	Litres	1,259	502	585

References

- (1) Scope 1 and 3 emissions for 2024 have been independently verified by UL Solutions, aligned with the ISO 14064-3:2019 standard with specification and guidance for the verification and validation of greenhouse gas statements. Previous years were verified by EcoAct.
- (2) Methane emissions are also included in scope 1 – Flaring, Venting and Fugitive.
- (3) All GHG emissions, other emissions, energy consumption and water management metrics based on GKP's 80% working interest in the Shaikan Production Sharing Contract.
- (4) Calculated in line with Streamlined Energy and Carbon Reporting ("SECR").



Social

Key performance highlights

Material factor	Metric	Unit	2022	2023	2024
Health, safety and wellbeing	Total Recordable Incident Rate ("TRIR")	Incidents per million man-hours	0.45	1.09	0
	Lost Time Incident Rate ("LTIR")	Incidents per million man-hours	0	0.54	0
Gender diversity	Proportion of female staff in workforce (as at 31 December)	%	14	16	15
	Proportion of female staff in Kurdistan (as at 31 December)	%	12	14	13
	Proportion of female staff in UK (as at 31 December)	%	38	37	39
Generating economic value in Kurdistan	Proportion of local staff in workforce (as at 31 December)	%	74	86	86
	Local supplier purchasing and contracting (80% WI) ⁽¹⁾	\$m	64	30	25
	Proportion of total purchasing and contracting with local suppliers ⁽¹⁾	%	35	36	42
	Payments to host government ⁽²⁾ (80% WI)	\$m	515	143	175
Local community projects	Total value of contributions to local communities (80% WI)	\$	833,500	7,500	219,200

References

- (1) Purchasing and contracting data prior to 2023 reflects amounts contracted but not necessarily spent in the year with local suppliers, used as a proxy for actual expenditure. 2023 and 2024 purchasing and contracting figures reflect actual expenditures in the year.
- (2) See the Report on Payments to Governments for 2024 on page 162 of the 2024 Annual Report for full disclosure.

Governance

Key performance highlights

(All dates as at 31 December of each year)

Material factor	Metric	Unit	2022	2023	2024
Board oversight	Proportion of independent Directors on Board ⁽¹⁾	%	63%	57%	57%
	Proportion of independent Directors on Nomination Committee	%	100%	100%	75%
	Proportion of independent Directors on Audit and Risk Committee	%	100%	100%	100%
	Proportion of independent Directors on Remuneration Committee	%	100%	100%	100%
	Proportion of female Directors on Board	%	25%	29%	43%
	Director Board meeting attendance	%	100%	100%	100%

- (1) Includes independent Non-Executive Chair.